



The Zebra-Tech Wet Tag



- Wireless and automatic
- 150m, 500m and 1000m operating depth options
- Uniquely identify your pot or gear
- Soak time
- Average and max depth and temperature
- GPS surface position*
track your path
- Identify gear tamper events!

* Deck Logger adds GPS positions to Wet-Tag data

Fisheries data collection

Turn your fishing gear into a data collection tool. The new Wet Tag from Zebra-Tech is designed to be fitted to fishing and research equipment to record data and transmit it to the Deck Logger without requiring data entry or effort by the user. It works in combination with the Deck Logger to streamline the process of gathering catch data.



Industry proven tools

Zebra-Tech has leveraged its experience in working with the New Zealand Paua (Abalone) and Lobster industries to help them manage their fishery. Fishermen on New Zealand's rugged east coast have used the Wet Tag to monitor their Lobster pots and gather useful data.





ZEBRA-TECH LTD

www.zebra-tech.co.nz

Instrumentation and equipment for environmental monitoring and research

Wet Tags enhance fisheries data

Designed to have at least a 5 year battery life, (typically 10 years and factory replaceable). The Wet Tag can be customised to only work with one Deck Logger for extra security or it can be configured to communicate with any Deck Logger, depending on the required data collection method.

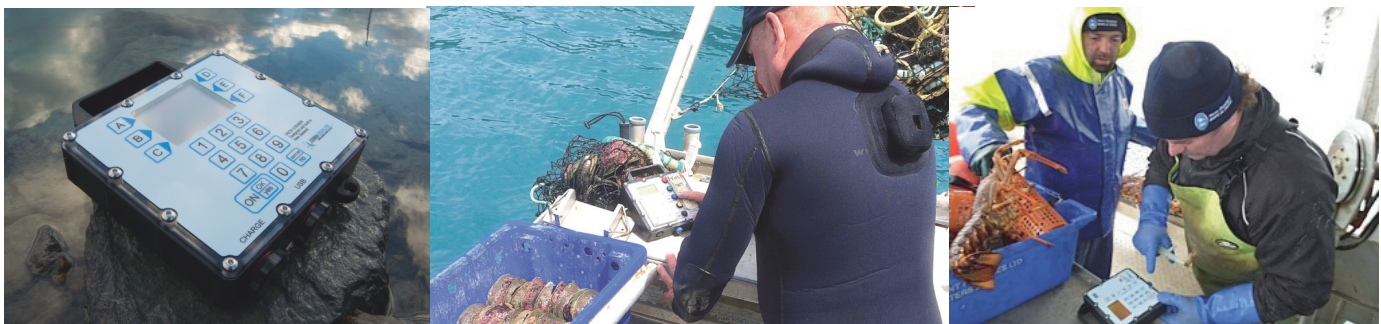
It allows researchers and fishing operators to fit a low cost data recorder that can provide a wealth of data everytime gear is deployed. It can auto populate fields in your Deck Logger so you don't have to enter as much data when filling out your fishing log.



“CRAMAC5 works closely with Zebra-Tech, it is only through this collaborative approach between fishermen and manufacturer that the lobster industry can have confidence in the equipment it uses...”

Larncé Wichman Executive officer CRAMAC5 Lobster region. New Zealand.

Zebra-Tech: Working with the fishing industry to provide rugged gear for commercial vessels



ZEBRA-TECH LTD
www.zebra-tech.co.nz

Ph: (International 0064) 3 548 0468

PO Box 1668, Nelson 7040, New Zealand 6 Cross Quay, Nelson 7010, New Zealand

Email: sales@zebra-tech.co.nz www.zebra-tech.co.nz